

SOCIETE HOTEL PALACE

RESIDENCE "DIAR EL BAHAR"



REPERAGE



Niveau : - 4 EME ETAGE

BLOC G

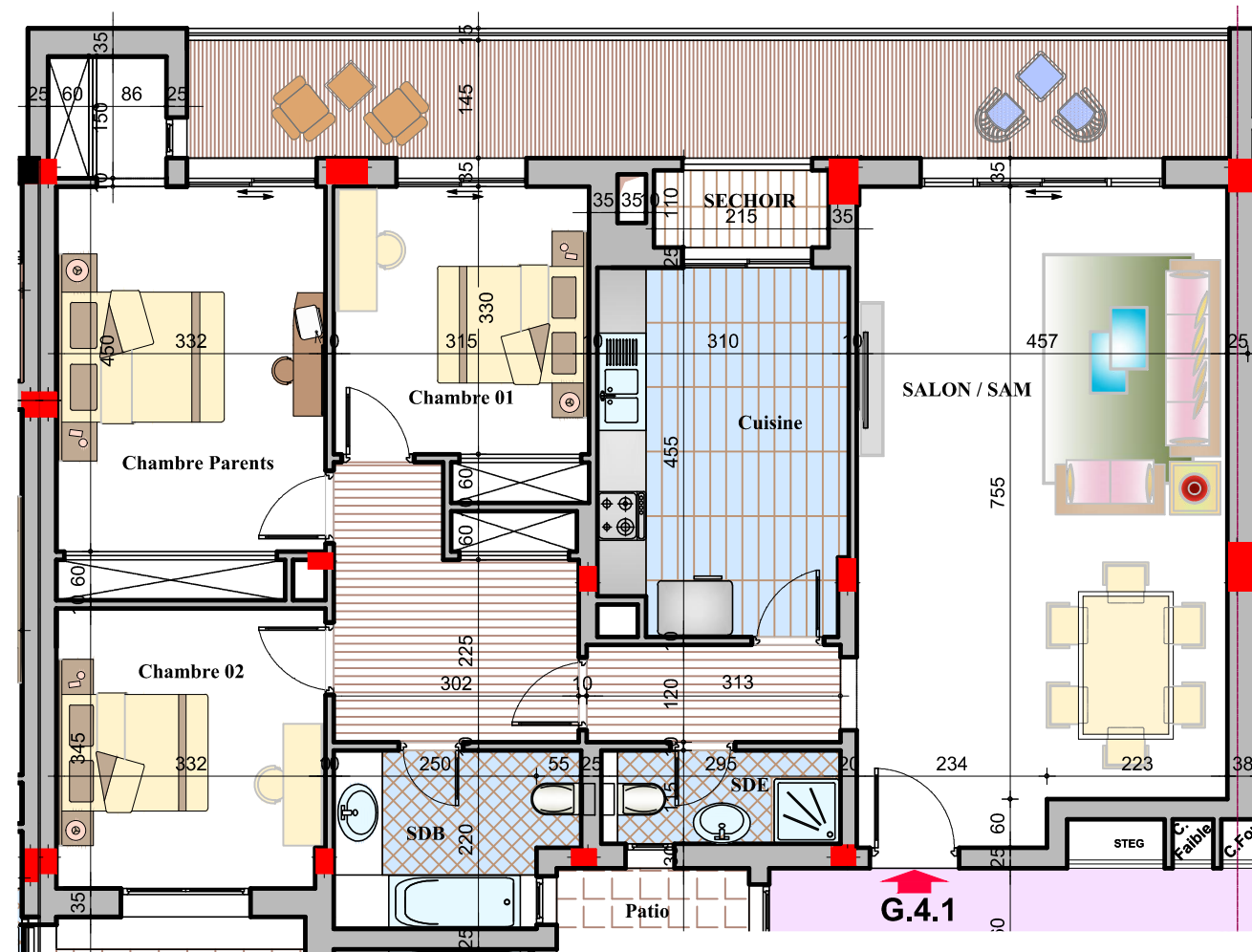
APPARTEMENT (S+3)

G.4.1

S.T.H.O: 135.43m²

S.T.V: 159.13m²

S.Terr.Couv:20.80m²



BLOC G