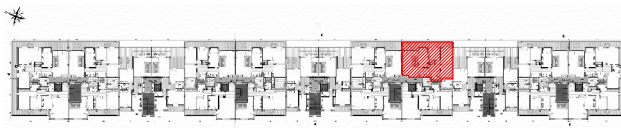


SOCIETE HOTEL PALACE

RESIDENCE "DIAR EL BAHAR"



REPERAGE



Niveau : 4 EME ETAGE

BLOC E

APPARTEMENT (S+2)

E.4.2

S.T.H.O: 132.02m<sup>2</sup>

S.T.V: 155.12m<sup>2</sup>

S.Terr.Couv:23.78m<sup>2</sup>

