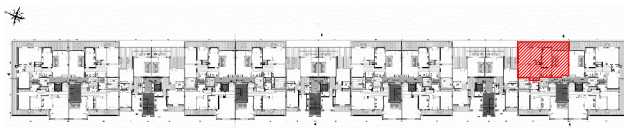


SOCIETE HOTEL PALACE

RESIDENCE "DIAR EL BAHAR"



REPERAGE



Niveau : 2 EME ETAGE

BLOC G

APPARTEMENT (S+3)

G.2.1

S.T.H.O: 135.43m²

S.T.V: 159.13m²

S.Terr.Couv:20.80m²

