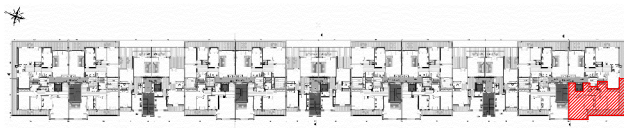


SOCIETE HOTEL PALACE

RESIDENCE "DIAR EL BAHAR"



REPERAGE



Niveau : 1 ER ETAGE

BLOC G

APPARTEMENT (S+2)

G.1.4

S.T.H.O: 117.59m<sup>2</sup>

S.T.V: 138.16m<sup>2</sup>

S.Terr.Couv:28.51m<sup>2</sup>



BLOC G

