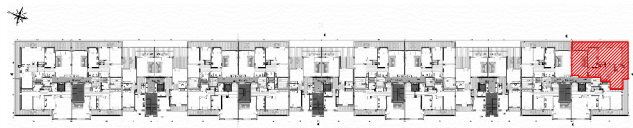


SOCIETE HOTEL PALACE

RESIDENCE "DIAR EL BAHAR"



REPERAGE



Niveau : 1 ER ETAGE

BLOC G

APPARTEMENT (S+3)

G.1.2

S.T.H.O: 146.47m<sup>2</sup>

S.T.V: 172.10m<sup>2</sup>

S.Terr.Couv:42.18m<sup>2</sup>

