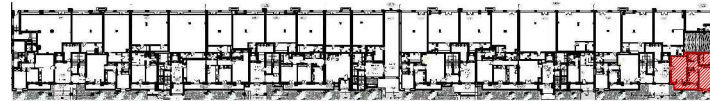


SOCIETE HOTEL PALACE

RESIDENCE "DIAR EL BAHAR"



REPERAGE



Niveau : REZ DE CHAUSSEE

BLOC G

APPARTEMENT (S+1)

G.0.2

S.T.H.O: 75.76m²

S.T.V: 89.02m²

S.Terr.Couv:9.58m²

S.Jardin:28.64m²

