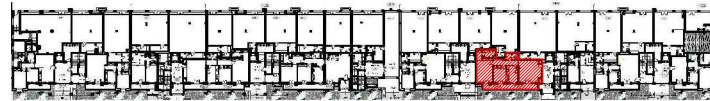


SOCIETE HOTEL PALACE

RESIDENCE "DIAR EL BAHAR"



REPERAGE



Niveau : REZ DE CHAUSSEE

BLOC F

APPARTEMENT (S+2)

F.0.1

S.T.H.O: 118.09m²

S.T.V: 138.76m²

S.Terr.Couv:22.64m²

S.Jardin:40.90m²

